



**SUNBELT**  
RENTALS

# AIR QUALITY CONTROL

INNOVATIVE SOLUTIONS  
TO KEEP EVERYONE SAFE



## WE ARE SUNBELT RENTALS

Excited by opportunity. Inspired by technology. Powered by people. We are Sunbelt Rentals – the UK's largest equipment rental and service solutions provider.

We invest in the latest, most efficient technology to reduce fuel usage and emissions. We recruit and train our own team of experts who know your industry inside out. We regularly maintain and service our equipment to maximise safety, performance, and productivity.

We are the team behind your team, the people you can trust.



Over  
**4,200**  
Employees



**185**  
Depots



# CONTENTS

Air Quality Control	6
Hierarchy of Controls	8
Mobile Dust Extraction & Filtration	10
Ventilation & Extraction	20
Local Exhaust Ventilation (LEV) Systems	25
Containment	26
On-Tool & Extraction Products (HV/LV)	34
Dust Suppression	42
Air Purification	48
Face Fit Testing	52
Test & Monitoring	54
Climate Control	60
Innovating Change. Protecting Our Planet.	62
Our Depot Network	64
Rental Equipment and Managed Solutions	66



## AIR QUALITY CONTROL

**Air quality control is essential in creating and maintaining a healthy and safe environment for your workers, patients, customers and the general public.**

It is estimated that the average person spends **90%\*** of their time indoors and inhales over **11,000\*\*** litres of air every day, making poor air quality a leading cause of many short-term and long-term health complaints. From respiratory problems and allergies to deadly cancers and cardiovascular diseases.

Working with industry-leading manufacturers, we have built a fleet of the most innovative and effective air quality control equipment, all readily available for hire with expert support and installation.

From the HEPACART® and STARC® ranges to ventilation and extraction equipment and mobile dust and fume extraction – we'll work with you and your unique environment to deliver a bespoke solution that protects everyone.

### We provide solutions for:

- Hospitals
- Industrial and manufacturing plants
- Construction sites
- Education settings
- Office and commercial spaces
- Events and festivals

Plus many more

\*[www.opinium.com/brits-spend-90-of-their-time-indoors/](http://www.opinium.com/brits-spend-90-of-their-time-indoors/)

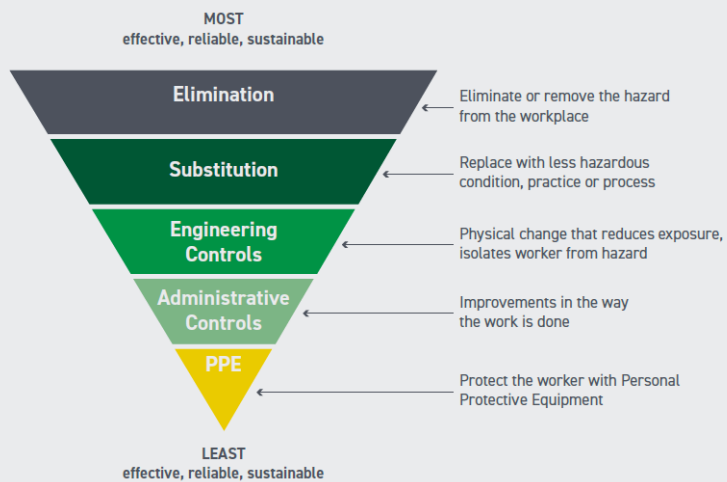
\*\*[www.seetheair.org/2017/01/31/we-breathe-11000-liters-of-air-daily/](http://www.seetheair.org/2017/01/31/we-breathe-11000-liters-of-air-daily/)



# HIERARCHY OF CONTROLS

A Hierarchy of Controls is a structured approach to implementing the most effective risk control measures possible. When working in environments that are susceptible to airborne hazards, it is vital that you determine which control measures will provide people with the safest way to minimise risk.

At Sunbelt Rentals we can support you with Engineering Controls that improve the air quality of your environment, as well as accredited Face Fit Testing to ensure any Respiratory Protection Equipment (RPE) is being worn correctly.



## MOBILE DUST EXTRACTION & FILTRATION

Dust can be produced when materials are cut, drilled, demolished, sanded, or shovelled. Not all dust particles are the same; some are more harmful than others. Dust extraction and filtration equipment, combined with effective monitoring and measurement and properly fitted respiratory protective equipment (RPE), can greatly reduce the risk.

We supply mobile dust extraction and filtration equipment from leading manufacturers suitable for environments including construction sites, manufacturing facilities, outdoor events, and many more.



## MOBILE DUST EXTRACTION & FILTRATION PRODUCTS

12

### DUST CONTROL DC AIR CUBE 500 110V AIR CLEANER

A highly efficient, robust, and compact air cleaner. The encapsulated fan housing contains a radial blower-type fan that builds high pressures across its entire flow range, providing effective air cleaning for the lifetime of the filter.



#### Features & Benefits:

- Energy-saving features with a continuously variable fan speed.
- The HEPA-13 filter captures even the smallest particles.
- Light indicates when the filter needs replacing to maintain optimum performance.

#### Specifications:

- Width x Height x Length: 34cm x 38cm x 50cm
- Weight: 13kg
- Inlet/Outlet Diameter: 38 x 34cm/12.5cm
- Power Consumption: 110v/195W
- Filter Class: H13
- Noise Levels: 45 – 65dB(A)

### DUST CONTROL DC AIRCUBE 1200 110V AIR CLEANER

A highly efficient and robust air cleaner capable of cleaning large rooms at a rate of up to 1,060 m<sup>3</sup>/h. The encapsulated fan housing contains a radial blower-type fan that builds high pressures across its entire flow range, providing effective air cleaning for the lifetime of the filter.



13

#### Features & Benefits:

- Energy-saving features with a continuously variable fan speed.
- HEPA-13 filter captures even the smallest particles.
- Light indicates when the filter needs replacing to maintain optimum performance.

#### Specifications:

- Width x Height x Length: 43cm x 86cm x 55cm
- Weight: 23kg
- Inlet/Outlet Diameter: 25cm/31.5cm
- Power Consumption: 230v 385W / 115v 375W
- Filter Class: H13
- Noise Levels: 60 – 68dB(A)

## MOBILE DUST EXTRACTION & FILTRATION PRODUCTS

14

### DUST CONTROL DC AIRCUBE 2000 110V AIR CLEANER

A powerful air cleaner with a robust, stainless-steel chassis and an encapsulated fan. With a variable speed setting and a capacity of approximately 1,800 m<sup>3</sup>/hr. The ergonomic design makes it easy to carry and transport.



#### Features & Benefits:

- Can be operated when positioned horizontally.
- HEPA-13 filter captures even the smallest particles, covering an area of 10m<sup>2</sup>.
- Light indicates when the filter needs replacing to maintain optimum performance.

#### Specifications:

- Width x Height x Length: 56cm x 102cm x 70cm
- Weight: 30kg
- Inlet/Outlet Diameter: 31.5cm/31.5cm
- Power Consumption: 230v 750W/115v 375W
- Filter Class: H13
- Noise Levels: 60 – 68dB(A)

15

### MAXVAC DUSTBLOCKER DB900 110V AIR CLEANER

Designed for operation 24 hours a day to continually clean the air you breathe. It is suitable for a wide range of applications, including woodworking shops, machine rooms, repair workshops, bakeries, renovations, and any other areas where silica dust, brick grout, or mortar may be present. Filtering 900m<sup>3</sup>/hr it is ideal for use in areas up to 300m<sup>3</sup>.



#### Features & Benefits:

- Easy to operate.
- Easy to move with locking wheels.
- Equipped with a 3-stage filtration system, including a HEPA-14 filter.
- Light indicates when the filter needs replacing to maintain optimum performance.

#### Specifications:

- Width x Height x Length: 38cm x 58cm x 45cm
- Weight: 18kg
- Power Consumption: 110v 180W
- Filter Class: H14
- Noise Levels: 59dB(A)



## MOBILE DUST EXTRACTION & FILTRATION PRODUCTS

16

### MAXVAC DUSTBLOCKER DB25 PRO 110V AIR CLEANER

Providing high air filtration to effectively keep products and workspaces free from airborne dust particles. The HEPA-13 filter delivers the highest standard of filtration to protect you and your workforce. It is suitable for use in larger buildings, construction sites, manufacturing plants, laboratories, hospitals, and electrical manufacturing. Filtering 2800m<sup>3</sup>/hr it is ideal for use in areas up to 900m<sup>3</sup>.



#### Features & Benefits:

- Easy to operate.
- Easy to move and transport between workspaces with locking wheels.
- Equipped with a 3-stage filtration system, including a HEPA-13 filter.
- Light indicates when the filter needs replacing to maintain optimum performance.

#### Specifications:

- Width x Height x Length: 49cm x 93cm x 65cm
- Weight: 43kg
- Power Consumption: 110v 325W
- Filter Class: H13
- Noise Levels: 69dB(A)

17

### MAXVAC DUSTBLOCKER DB4000 110V AIR CLEANER

Providing high air filtration to effectively keep products and workspaces free from airborne dust particles. The HEPA 13 filter delivers the highest standard of filtration to protect you and your workforce. Designed for ease-of-use with ducting that provides direct extraction in the work area, or for use in a work tent where cutting and grinding causes large volumes of dust. It is suitable for use in large spaces including construction and manufacturing plants.



#### Features & Benefits:

- Easy to operate.
- Easy to move and transport between workspaces with locking wheels.
- Equipped with a 3-stage filtration system, including a HEPA-13 filter.
- Light indicates when the filter needs replacing to maintain optimum performance.

#### Specifications:

- Width x Height x Length: 70cm x 85cm x 170cm
- Weight: 60kg
- Inlet: 40cm
- Power Consumption: 110v 375W
- Filter Class: H13
- Noise Levels: 50 dB(A)

# MOBILE DUST EXTRACTION & FILTRATION PRODUCTS

## HEPAFORCE SCRUBBERS

Negative air machines and scrubbers are used to clean the air and create positive or negative air pressure in medical facilities, factories, commercial buildings, construction sites, and even confined spaces. Manufactured in medical-grade aluminium with HEPA filtration, cleaning air to 99.99% at 0.3 microns rated for ICRA compliance levels 1 – 1V.

### Features & Benefits:

- Easy to operate.
- Easy to move with two hospital-grade non-marking casters.
- Aircraft-grade housing.
- Silicon-sealed seams.
- Variable speed control.
- Light indicates when the filter needs replacing to maintain optimum performance.
- HEPA filtration cleaning to 99.99% at 0.3 microns.

1100	2100
 <p>The image shows the HEPAFORCE 1100 scrubber, a compact, rectangular unit with a blue top and a silver body. It features a prominent 'HEPAFORCE' logo with a blue arrow pointing left, and the 'SUNBELT RENTALS' logo below it. The unit is mounted on two large, black, non-marking casters. A control panel is visible on the top surface.</p>	 <p>The image shows the HEPAFORCE 2100 scrubber, a larger, more industrial-looking unit with a silver, metallic finish. It has a boxy design with a large circular air outlet on the right side. The 'HEPAFORCE' and 'SUNBELT RENTALS' logos are visible on the front panel. It is supported by a sturdy metal frame with four casters.</p>
<p><b>Specifications:</b></p> <ul style="list-style-type: none"> <li>• Width x Height x Length: 79cm x 70cm x 89.5cm</li> <li>• Weight: 55kg</li> <li>• Airflow: 50-1000CFM</li> <li>• Power Consumption: 110v</li> <li>• Filter Class: H13</li> </ul>	<p><b>Specifications:</b></p> <ul style="list-style-type: none"> <li>• Width x Height x Length: 70cm x 85cm x 170cm</li> <li>• Weight: 60kg</li> <li>• Airflow: 100-1700CFM</li> <li>• Power Consumption: 110v 375W</li> <li>• Filter Class: H13</li> <li>• Noise Levels: 50 dB(A)</li> </ul>

## VENTILATION & EXTRACTION

Maintaining healthy levels of oxygen and removing hazardous contaminants from the atmosphere is essential to preventing serious health problems or even death. These threats are often hard to detect and protect against, but by employing effective controls you can reduce the risk and mitigate the presence of harmful substances.

With our range of ventilation and extraction solutions, including fans and ducting, we can help you ensure the safety and comfort of your workers. We'll also work with you to design an effective solution tailored to your environment.



## VENTILATION & EXTRACTION PRODUCTS

22

### CENTRIFUGAL FANS

With high airflow capacity, static pressure capabilities, and the ability to handle particulate-laden or corrosive gases, our range of centrifugal fans are ideal for use in a wide range of applications, including industrial and manufacturing processes.

Models range from 5,000m<sup>3</sup>/hr airflow units in a compact and portable design, to large and robust units with 35,000m<sup>3</sup>/hr airflow. Ducting can also be provided on request.

5,000 M <sup>3</sup> /HR	20,000 M <sup>3</sup> /HR	35,000 M <sup>3</sup> /HR
		
<p><b>Specifications:</b></p> <ul style="list-style-type: none"> <li>• Width x Height x Length: 68cm x 102.5cm x 105cm</li> <li>• Weight: 75kg</li> <li>• Airflow: 5,000m<sup>3</sup>/hr</li> <li>• Duct Diameter: 30cm</li> <li>• Noise Levels: 84dB(A)</li> <li>• Outlet Diameter: 30cm</li> <li>• Supply Current: 27amps</li> <li>• Voltage: 110/230v</li> <li>• Can be used with up to 100m of flexible duct</li> </ul>	<p><b>Specifications:</b></p> <ul style="list-style-type: none"> <li>• Width x Height x Length: 117.5cm x 137cm x 130.5cm</li> <li>• Weight: 350kg</li> <li>• Airflow: 20,000m<sup>3</sup>/hr</li> <li>• Duct Diameter: 60cm</li> <li>• Noise Levels: 89dB(A)</li> <li>• Outlet Diameter: 50cm</li> <li>• Supply Current: 27amps</li> <li>• Voltage: 415v</li> <li>• Suitable for long duct lengths</li> </ul>	<p><b>Specifications:</b></p> <ul style="list-style-type: none"> <li>• Width x Height x Length: 160cm x 179cm x 172cm</li> <li>• Weight: 600kg</li> <li>• Airflow: 35,000m<sup>3</sup>/hr</li> <li>• Duct Diameter: 70cm</li> <li>• Noise Levels: 85dB(A)</li> <li>• Outlet Diameter: 70cm</li> <li>• Supply Current: 27amps</li> <li>• Voltage: 415v</li> <li>• Suitable for long duct lengths</li> </ul>

23


## VENTILATION & EXTRACTION PRODUCTS

24

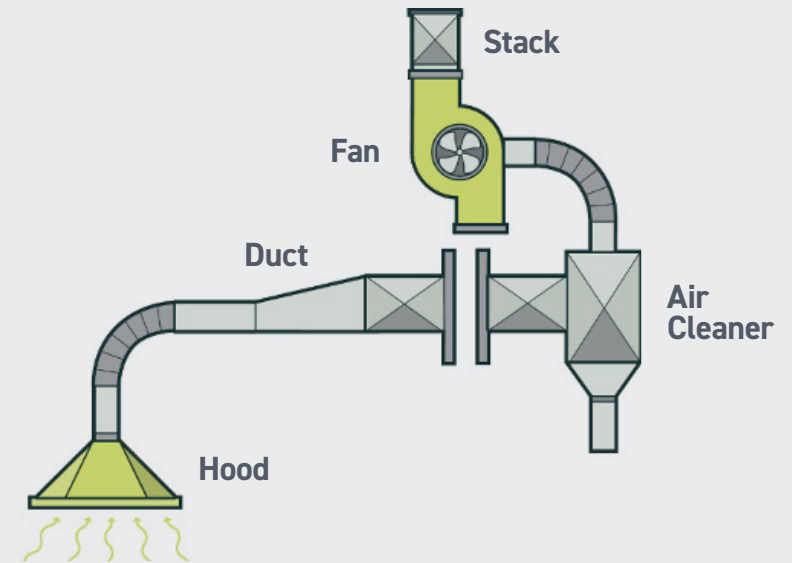
### AXIAL FANS

Our range of Axial fans are designed to move air or gas and can be used in applications where high flow is required but where there are low pressure requirements.

They have the capability to move large volumes of air with relatively low noise levels and a compact design.

3,500 M <sup>3</sup> /HR	10,000 M <sup>3</sup> /HR
	
<p><b>Specifications:</b></p> <ul style="list-style-type: none"> <li>• Width x Height x Length: 32cm x 41cm x 36cm</li> <li>• Weight: 14kg</li> <li>• Airflow: 3500m<sup>3</sup>/hr</li> <li>• Duct Diameter: 300mm</li> <li>• Voltage: 110v / 230v</li> </ul>	<p><b>Specifications:</b></p> <ul style="list-style-type: none"> <li>• Width x Height x Length: 62.5cm x 89cm x 71.2cm</li> <li>• Weight: 90kg</li> <li>• Airflow: 10,000m<sup>3</sup>/hr</li> <li>• Duct Diameter: 50cm</li> <li>• Noise Levels: 83dB(A)</li> <li>• Outlet Diameter: 50cm</li> <li>• Supply Current: 4.2amp</li> <li>• Voltage: 415v</li> <li>• Suitable for long duct lengths</li> </ul>

25



## LOCAL EXHAUST VENTILATION (LEV) SYSTEMS

Many jobs across a variety of industries create harmful dust and fumes that can negatively impact a worker's health. Local Exhaust Ventilation (LEV) systems, sometimes referred to as extraction or fume control, are a commonly used method of controlling these hazards.

Using a system of enclosed hoods, ducting, filters, and fans, dust and fumes are extracted and moved away from a worksite before being passed through a filter to remove the particles while a fan creates the airflow.

We will work with you to develop a bespoke LEV system suited to your environment, from single workstations to multi-work areas, our systems are designed to provide the safest possible environment.

# CONTAINMENT

Containment plays a vital role in controlling airborne hazards, safeguarding the health and well-being of individuals and the environment. By using containment equipment, you can create a controlled environment that effectively captures, filters, and isolates airborne contaminants.

Our industry-leading and award-winning range of containment solutions are ideal for mitigating the risk of exposure and potential health consequences in many environments, from healthcare settings to construction and industrial applications.



## CONTAINMENT PRODUCTS

28

### HEPACART® MOBILE CONTAINMENT CART

Quickly create a safe and contained space, making dust containment and infection control in high-risk environments easier to handle without compromising safety protocols.

#### Features & Benefits:

- Manual and automatic versions available.
- Embedded negative air machine and scrubber.
- Lab-tested filtration system with medical grade 99.99+% at .03 microns. MERV 18 plus. Double gasket.
- Heavy-duty, fully boxed aluminium base, with each wheel rated for 900lbs.
- Best-in-class enclosure constructed with durable, healthcare approved, anti-microbial, anti-static, fire-resistant and easy-to-clean material.
- Easily installed, moved, and dismantled in less than two minutes.



HIRE EXCLUSIVELY FROM



#### Specifications: (based on automatic model)

- Width x Depth x Height: 74cm x 140cm x 173cm
- Weight: 417Kg
- Power: 230v
- Airflow: 750 CFM

29

### HEPACART® ANTEROOM

The award-winning HEPACART® AnteRoom is a temporary room isolation module with external negative air machine adapters on either side, serving as an entryway or vestibule into any larger room undergoing works.

#### Features & Benefits:

- Mobile, extendable, and easy-to-install in less than five minutes.
- Provides total room isolation for any door size with reversible door hinges to alter swing direction.
- Negative air pressure is achieved with the connection of an NPU (HEPA 14), ensuring air filtration, dust collection, and infection control.
- Includes a heavy-duty and magnetic sealing aluminium module, floor levellers, three windows, flex hose adaptor, and shut off plates.
- Additional expansion units can be added to extend the depth in 1ft and 2ft increments.
- Fits a 122cm door natively and can be shortened to 92cm and extended to 153cm.



HIRE EXCLUSIVELY FROM



#### Specifications:

- Width x Depth x Height: 122cm x 61cm x 218cm
- Weight: 75kg
- Power: 230v

## CONTAINMENT PRODUCTS

30

### STARC® WALL SYSTEM

The most durable modular wall system in its class, exceeding standards as a simple, easy-to-use, and environmentally friendly alternative to other temporary dust containment options. With a unique telescopic design, the airtight walls can be configured into almost every shape.



HIRE EXCLUSIVELY  
FROM



#### Features & Benefits:

- Real wall option provides a 25 decibel sound reduction with an insulated urethane foam core.
- Install 100ft of wall in less than one hour.
- Walls are easily disinfected between uses.
- Panels are available in 12", 18" 24", and 48" telescopic from 2.08 metres to 3.12 metres.

### STARC® LITE BARRIER

A lightweight option to the original STARC® wall system. With a slim aluminium frame and fibreglass reinforced polymer partitions, it is easy and quick to install and features the same telescopic design as the original, allowing it to be configured into almost every shape.



HIRE EXCLUSIVELY  
FROM



#### Features & Benefits:

- Install 100ft of wall in less than one hour.
- Each Lite Barrier panel weighs less than 18kg for easy installation and transportation.
- Walls are easily disinfected between uses.
- Panels are available in 12", 18" 24", and 48" telescopic from 2.08 metres to 3.12 metres.

31



## CONTAINMENT PRODUCTS

32

### CUTTING TENT ECHO BARRIER (SOUND REDUCING)

A quick and easy way to reduce the spread of debris from cutting jobs. The innovative design offers superior noise reduction and absorption from all directions without compromising the process for cutting panels, timbers, tiles, tubes, or beams of any length.



#### Features & Benefits:

- Reduce noise pollution by up to 38.5dB.
- Ideal for a wide range of environments, indoors and outdoors.
- Unique roof for use inside buildings.
- Constructed with extremely durable, waterproof, and high-quality PVC with clear windows for safe inspection.
- Quick install with two people in 15 minutes.

#### Specifications:

- Width x Height x Length: 240cm x 210cm x 325cm
- Weight: 136kg
- Max Noise Reduction: 38.5dB
- Max Noise Absorption: 89% (in all directions)
- UV Resistant: 5 years
- Fire Resistant: BS 7837-1996 (barriers), class B1 (windows/roof)

### INFLATABLE CUTTING TENT

A unique solution for the hire market providing a self-contained workspace that is both cost-effective and easy to re-locate between job sites. Designed to minimise the spread of any respirable dust produced during cutting processes in construction applications.



33

HIRE EXCLUSIVELY FROM



#### Features & Benefits:

- Lightweight at just 35kg and packed in a carry bag.
- Inflates in less than 3 minutes using a manual hand pump.
- Recirculation of filtered, clean air through inlet ports on the tent.
- Easily extended by zipping additional tents together.
- Fire retardant.

#### Specifications:

- Width x Height x Depth: 300cm x 220cm x 300cm
- Weight: 34kg

## ON-TOOL EXTRACTION PRODUCTS (HV/LV)

On-tool extraction, a type of Local Exhaust Ventilation (LEV), is a vital process used across many industries to manage and capture airborne dust and particulate matter generated during work operations. Effective on-tool extraction creates a safer working environment for individuals directly involved in the job as well as the wider workforce. Preventing the accumulation of dust around machines also has the added benefit of extending their lives.

Our fleet of on-tool extraction equipment includes high-volume, low-velocity vacuums, all delivered and installed to meet the unique needs of your working environment.



## ON-TOOL & EXTRACTION PRODUCTS (HV/LV)

36

### MAXVAC DURA DV20-MB CLASS 110V VACUUM

A certified M-Class single-motor vacuum with a 20 litre drum and wet and dry capability. Suitable for use in a wide range of applications.



#### Features & Benefits:

- Metal casters with non-marking wheels make it suitable for a wide range of indoor applications.
- Certified M-Class HEPA filter.
- Compact and durable 20 litre drum.
- Provided with a heavy-duty filter bag.
- 4 metre power tool hose.
- Retains dust during transport.
- A manual filter clean button enables on-demand cleaning.

#### Specifications:

- Width x Length x Height: 36cm x 36cm x 49cm
- Weight: 6.5kg
- Airflow: 55l/s
- Capacity: 20 litres
- Depression: 220mbar
- Power Cord Length: 10m
- Power: 1200w
- Voltage: 110V
- Noise Level: 69dB(A)

37

### MAXVAC DURA DV80-MB CLASS 110V VACUUM

A twin-motor vacuum with wet and dry capability and an 80 litre drum. Suitable for use in a wide range of applications, it has an extremely tough drum to withstand the rigours of daily use.



#### Features & Benefits:

- Metal casters with non-marking wheels make it suitable for a wide range of indoor applications.
- Twin motors with high suction.
- Provided with a heavy-duty filter bag.
- 4 metre hose.
- Large waste capacity.
- Optional floor bar.

#### Specifications:

- Width x Length x Height: 62cm x 65cm x 87cm
- Weight: 32kg
- Airflow: 109l/s
- Capacity: 80 litres
- Power Cord Length: 7.5m
- Motor: 2 x 1200w
- Voltage: 110V
- Noise Level: 68dB(A)

## ON-TOOL & EXTRACTION PRODUCTS (HV/LV)

38

### STARMIX IPULSE H-CLASS 110V VACUUM

The Starmix iPulse is the perfect H-class vacuum for on-tool extraction. It connects directly to the electric power tool during processes including drilling, milling, grinding, and sawing with concrete, plaster, stone, cement, wood, paints and varnishes, and hazardous H-class dust.



#### Features & Benefits:

- 300g force filter cleaning makes it suitable for use with plaster.
- Suitable for wet and dry suction with water level detection and an electronic shut-off sensor.
- Uninterrupted airflow during cleaning.
- Permanent pulse filter cleaning technology.
- Intelligent electronics measure negative pressure.
- 35 litre waste capacity.
- A powerful, durable, high-performance motor fan with separate air circuits for cooling and operating air.

#### Specifications:

- Width x Length x Height: 53cm x 40cm x 92cm
- Weight: 16.8kg
- Power: 110V
- Noise Level: 69dB(A)

### MV SUPRA SV1-430 M/H- CLASS 110V VACUUM

The MV Supra SV1-430 is a compact single-phase industrial vacuum with a large filtering surface and semi-automatic filter cleaning system. Ideal for use with dry and difficult dust, it can easily be connected to a power tool for on-tool extraction.



#### Features & Benefits:

- 20 litre detachable waste container.
- Twin motors.
- Air Pulse filter cleaning.
- Provides on-tool extraction when connected to a power tool.

#### Specifications:

- Width x Length x Height: 58.5cm x 54.5cm x 139.5cm
- Weight: 45kg
- Power: 110V
- Surface Area: 40,000cm<sup>2</sup>
- Bin Capacity: 45 litres
- Noise Level: 72dB(A)
- Voltage: 110V
- Noise Level: 68dB(A)

39

## ON-TOOL & EXTRACTION PRODUCTS (HV/LV)

40

### MV SUPRA SV1-470 M/H-CLASS 110V VACUUM

The most powerful single-phase industrial vacuum in the MAXVAC range. With three by-pass motors, it can reach an impressive power output of 3.9 kW. The SV1-470-MLS industrial vacuum works in all conditions, capturing dust, shavings, liquids, and other difficult materials using pipes that can be several metres long. It can also be connected to a power tool for on-tool extraction.



#### Features & Benefits:

- Manual filter dust shaker.
- Triple motors.
- Fitted with a 24,000cm<sup>2</sup> polyester pocket filter certified as M-class.
- Provides on-tool extraction when connected to a power tool.

#### Specifications:

- Width x Length x Height: 66cm x 80cm x 151.5cm
- Weight: 70kg
- Power: 110V
- Noise Level: 72dB(A)

### DC2900 H-CLASS 110V VACUUM

A lightweight and portable dust extraction unit designed for vacuum cleaning and source extraction from handheld power tools, with up to 5" suction casings, and small table saws. It is also ideal for use with sharp items such as metal chips.



#### Features & Benefits:

- Sturdy steel frame with large wheels.
- Optional steel waste container.
- HEPA filtration.
- Provides on-tool extraction when connected to a power tool.

#### Specifications:

- Width x Length x Height: 44.5cm x 57cm x 111cm
- Weight: 16kg
- Power: 110V
- Noise Level: 68dB(A)

41

# DUST SUPPRESSION

Dust can be produced when materials are cut, drilled, demolished, sanded, or constructed. Not all dust particles are the same and some are more harmful than others. Dust suppression measures, such as misting, combined with effective monitoring and measurement and properly fitted respiratory protective equipment (RPE), can greatly reduce the risk.

We supply products from leading manufacturers suitable for environments including construction sites, manufacturing facilities, outdoor events, and many more.

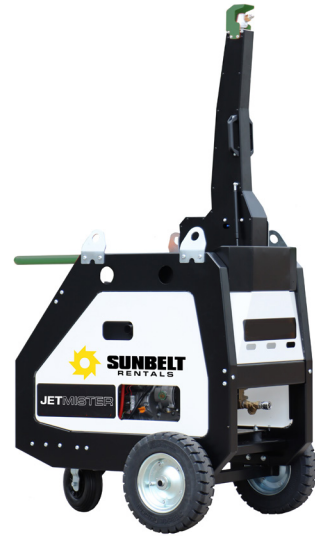


## DUST SUPPRESSION PRODUCTS

44

### JETMISTER JM35 DUST SUPPRESSION CANNON

The JM35 is designed to suppress dust using water, either from a direct tap feed or via an IBC with a fuel pump, and is suitable for use in most construction and demolition applications. The 90° swinging jet nozzle provides a 15 – 35 metre throw to provide ample coverage, while a simple and innovative design means it can be deployed and setup in minutes.



#### Features & Benefits:

- Emergency stop and warning signals.
- A foldable mast allows easy transportation.
- Heavy-duty puncture-proof wheels.
- Heavy-duty mast with 0-30° tilt positioning for reaching high areas.
- High-pressure mist can be adjusted with engine speed and pressure regulator.
- Lifting eyes gets the JetMister into difficult areas.
- Move the jet automatically from left to right.
- Simple control operation to start/stop pump.
- Petrol or diesel option.

#### Specifications:

- Width x Height x Length: 87cm x 219cm x 122cm
- Weight: 215kg
- Water Connection: 1" Storz Connection quick release
- Power Consumption: 10kw Fuel Vanguard
- Water Consumption: 14-40 LPM
- Noise Levels: 90dB(A)

45

### CM10 DUST CANNON MISTER

The ideal solution for controlling environmental dust and odour hazards. With an electric-powered fan and misting nozzles, it blows water droplets to suppress fine airborne dust particles. The high-pressure water pump uses only 2 litres per minute, making it an ideal solution if you're looking to reduce water usage and on-site flooding. It can be used with either a water bowser or mains supply and can be positioned in hard to reach areas. Suitable for use in small demolition operations, recycling sites, environmental remediation, steel/slag handling, wood processing, and event cooling.



#### Features & Benefits:

- 10 metre water throw.
- Fan duct protected with safety grill on outlet and inlet.
- Easy-to-clean misting nozzles.
- Handle for ease of fan tilt -20 to +48 degrees.
- Dual pump and fan mode switches with emergency stop, 6 metre lead and 32a commando plug.
- Large puncture-proof wheels help position the cannon over rough ground.

#### Specifications:

- Width x Height x Length: 34cm x 38cm x 50cm
- Weight: 45kg
- Water Connection: 1" Storz Connection quick release
- Water Consumption: 2 LPM
- Noise Levels: 80dB(A)
- Power: 110v 16A

## DUST SUPPRESSION PRODUCTS

46

### MMW-HP4-MIST PERIMETER DUST SUPPRESSION

Designed for industrial fogging, and the ideal solution for cooling, odour control, dust suppression, humidification, and special effects creations. A range of electric-powered pump options are built into the wheeled trolley with integral control. The fogging nozzle hose lines are supplied with nozzle protectors included.



#### Features & Benefits:

- Mist nozzles c/w filters.
- Electric control panel with motor overload protection.
- 6 metre supply lead and plug.
- Manual adjustable height mast with pin position lock 1.5 – 2m.
- Mobile heavy-duty frame with 300mm puncture-proof wheels.
- High-pressure protection on the water pump.
- 100-litre (26 USG) water tank.
- 110v 16A electric pump.
- Pressure gauge.
- 20 metre fogging line.

#### Specifications:

- Width x Height x Length: 720mm x 1050mm x 720mm
- Weight: 45kg
- Water Connection 1" Storz Connection quick release
- Power: 110v 16A
- Noise Levels:75dB(A)

47



## LOOKING FOR A LARGER DUST SUPPRESSION SOLUTION?

Through our trusted partners we can provide bespoke solutions to fit every environment.

Tell us about your site, your works, and the hazards you need to control and we'll recommend, design and deliver an end-to-end solution to keep everyone safe.



# AIR PURIFICATION

The air we breathe indoors can be contaminated with a range of harmful pollutants, including dust, viruses, and bacteria. These pollutants can have adverse effects on respiratory health and contribute to the development of chronic health conditions.

Using air purification and disinfectant devices, you can capture and remove contaminants, enhancing the overall health and well-being of individuals and creating more comfortable and productive work and living environments. This is even more important in sensitive or critical spaces, such as hospitals.



## AIR PURIFICATION PRODUCTS

50

### S400 AIR DISINFECTANT DEVICE

Disinfect the air and create a safe and comfortable environment for everyone. Unlike other air purifiers, the S400 combines HEPA filtration, UV-C technology, and carbon filtration with fast-moving air to kill 99.9995% of all airborne viruses and germs in your environment within minutes.



#### Features & Benefits:

- The fan performs complete air change disinfection within 30 minutes (800 cubic feet area).
- The SAM HEPA® pre-filter cartridge captures particulates down to 0.3 microns.
- Patented carbon substrate for complete odour and VOC removal.
- On-board digital screen reporting: HEPA filter/air flow integrity, UV-C light integrity/intensity, carbon final filtration integrity, processed CFM air volume.
- Suitable for use in multiple environments, including medical, retail, education and commercial spaces.

#### Specifications:

- Width x Height: 56cm x 94cm
- Weight: 28.12kg
- Airflow: 400CFM
- Noise Level: 62 – 64dB(A)



51

### AIR X PRO AIR PURIFIERS

The Air X Pro Air Purifier range features patented technology that removes up to 99.9% of all particles, viruses, bacteria, and other airborne allergens in the room.

#### Features & Benefits:

- Using smart technology, the Air X Pro Air Purifiers read the air quality and automatically configure settings to purify the air effectively.
- Features smart auto-clean mode, sleep mode, timer function, and laser particulate sensor.
- Super slim and compact design ideal for smaller environments where space is restricted.
- Suitable for use in multiple environments, including medical, retail, education, and commercial spaces.

<p><b>AXP-400</b></p> 	<p><b>AXP-800</b></p> 
<p><b>Specifications:</b></p> <ul style="list-style-type: none"> <li>• Width x Depth x Height: 43cm x 12.7cm x 72cm</li> <li>• Weight: 8.5kg</li> <li>• Airflow: 380m<sup>3</sup>/hr</li> <li>• Power: 40W</li> <li>• Energy Efficiency Rating: A+++</li> <li>• Maximum Room Size: 65m<sup>2</sup></li> <li>• Fan Speeds: 4</li> <li>• Noise Level: 35 – 55dB</li> </ul>	<p><b>Specifications:</b></p> <ul style="list-style-type: none"> <li>• Width x Depth x Height: 43cm x 12.7cm x 102cm</li> <li>• Weight: 13.5kg</li> <li>• Airflow: 720m<sup>3</sup>/h</li> <li>• Power: 75W</li> <li>• Energy Efficiency Rating: A+++</li> <li>• Maximum Room Size: 130m<sup>2</sup></li> <li>• Fan Speeds: 4</li> <li>• Noise Level: 35 – 60dB</li> </ul>

## FACE FIT TESTING

**Where respiratory protective equipment (RPE) is used as a control measure under health and safety legislation, it is vital that the selected RPE is both adequate and suitable.**

To ensure that the selected RPE has the potential to provide adequate protection for individual wearers, the Approved Codes of Practice (ACOPs) supporting the Control of Substances Hazardous to Health Regulations (COSHH), the Control of Lead at Work Regulations, the Control of Asbestos Regulations, the Confined Spaces Regulations, and the Ionising Radiations Regulations stipulate that tight-fitting RPE should be fit tested as part of the selection process.

### We offer:

- FIT2FIT accredited quantitative and qualitative face fit testing
- Qualitative and quantitative train the tester courses
- RPE user's training
- RPE maintenance and servicing
- RPE supply
- Powered respirators
- Qualitative and quantitative test kits and solutions

**WATCH HOW WE CARRIED OUT OVER 6,000 CRITICAL FACE FIT TESTS FOR THE NHS DURING THE COVID-19 PANDEMIC**



## TEST & MONITORING

Being able to monitor the surrounding environment for any airborne hazards is one of the first steps to being able to control and reduce risk. Industrial activities often generate airborne dust and particles that can have adverse health effects and contribute to pollution.

Our range of products available for hire includes complete environmental monitoring stations, hand-held dust detection devices, asbestos detection, and the world-first, real-time respirable crystalline silica monitoring device.

### We offer:

- State-of-the-art devices that provide real-time measurement of key air pollutants.
- Portable and easy-to-use monitors to provide accurate readings for parameters such as particulate matter (PM), volatile organic compounds (VOCs), carbon dioxide (CO<sub>2</sub>), carbon monoxide (CO), ozone (O<sub>3</sub>) and more.
- Quickly identify pollution sources, evaluate indoor air quality, and enable proactive decision-making for mitigating potential risks.

**HIRE  
ONLINE  
TODAY**



[SUNBELTRENTALS.CO.UK](https://www.sunbeltrentals.co.uk) FOR MORE INFO



## TEST & MONITORING PRODUCTS

56

### TROLEX AIR XS RESPIRABLE CRYSTALLINE SILICA MONITOR

The world-first real-time silica monitor that enables you to analyse multiple detection parameters for silica, including size, symmetry, and a series of optical markers unique to RCS particulates. High-speed data is processed in real-time and triggers a triple-voting system that positively identifies and distinguishes silica content.



#### Features & Benefits:

- Monitor in real-time 24 hours a day.
- Specialised software Breathe XS for reports and analysis.
- Data can be downloaded and exported in .CSV format.
- Custom audible alarms.

#### Applications:

- Can be used as a site boundary monitor to help monitor levels of RCS on the edges of your site.
- Can also be used as a tool to help evaluate where certain PPE needs to be worn in areas where RCS is present; this could be in a manufacturing or construction context.



57

### CASELLA GUARDIAN ENVIRONMENTAL MONITORING STATION

The industry-leading 'all-in-one' environmental monitoring station. The Guardian is the UK's leading product for remotely monitoring site perimeters. Once powered, the unit will continually monitor user-determined parameters and automatically upload to a cloud-based platform. The unit will generate a multiple-format report on a schedule assigned by the user.



#### Features & Benefits:

- Class 1 noise monitor.
- PM10, PM2.5, and PM1 dust particulate monitor.
- 3-axis vibration geophone.
- Ultrasonic wind speed and direction sensor.

#### Applications:

- Modules can be customised to meet the needs of your site.
- Monitor noise, wind, vibration, and dust.
- Ideal for sites in low-emission areas or clean-air zones in cities across the UK, it can help you remain compliant with local environmental standards and legislation.



## TEST & MONITORING PRODUCTS

58

### ALERT PRO 2000

The world-first and only real-time detection system prevents prolonged and unintentional exposure to asbestos. The ALERT PRO range of warning devices provide real-time alerts (and downloadable data) when asbestos-containing materials have been disturbed and fibres released. Asbestos is most dangerous when damaged, disturbed, or degraded, and its toxic fibres are released into the air, where inhalation or ingestion can lead to several serious, often fatal diseases, such as mesothelioma, asbestosis, and other cancers.

#### Features & Benefits:

- The PRO2000 offers real-time notifications for alarms, warnings, and faults by email and SMS message.
- Manage access to unit data by person, region, or project and run bespoke unit reports.
- Uses state-of-the-art light scattering technology to identify asbestos fibres.
- The unit only alarms when it is 99% confident asbestos has been detected.



#### Applications:

- Suitable for use in a wide range of applications, including pre-2000 buildings and public sector buildings such as hospitals and schools.
- Asbestos is the world's biggest occupational killer; a real-time method of detecting asbestos in construction environments is invaluable.
- It can be used for conducting surveys before work commences or where there is suspicion asbestos might be present in a working environment.

SCAN ME  
FOR MORE  
INFORMATION



59

### TROLEX XD1+ PERSONAL DUST MONITOR

A continuous and real-time personal particulate detection monitor with instant alarms and lightweight design for comfort and wearability. Designed to provide detailed, accurate, real-time data on airborne particulates so that users can take appropriate actions to stay safe and ensure personnel are fully protected from particulate-related health hazards.

#### Features & Benefits:

- Understand where, when, and how much exposure you've had to dangerous particulates.
- STEL and TWA for PM1, PM2.5, PM4.25, and PM10.
- No filters, pumps, tubes, or replaceable parts needed.
- Automatic self-test routine and maintenance cycle.
- XD1+ is compatible with BreathMOBILE app for live and historic data.



#### Applications:

- Customise short-term exposure limit (STEL) and time-weighted average (TWA) levels for PM1, PM2.5, PM4.25, and PM10.
- Monitor respirable particulate matter (PM) to indicate and warn of personal exposure in working and operating environments.

SCAN ME  
FOR MORE  
INFORMATION



# CLIMATE CONTROL

**The UK's largest fleet of modern heating, cooling, and dehumidification equipment to provide safe and comfortable environments for everyone, everywhere.**

We understand the importance of having a comfortable and safe environment. We've got the expertise and product range to enable you to control your indoor climate and create the most productive and healthy environment.

Whether you're looking for temporary cooling for your hospital wards, server rooms, or office spaces, or emergency heating and drying equipment during cold and wet weather. We're here to help with the UK's largest fleet of rental equipment, sourced from industry-leading manufacturers and delivered next-day from our nationwide depot network.

With over 40 years' experience, our highly trained team works with you to design the most efficient and cost-effective solution personalised to your specific environment, delivered on time, every time.

**VIEW THE RANGE**



## INNOVATING CHANGE. PROTECTING OUR PLANET.

### **Our Planet is our action plan.**

It's inspired by one clear purpose: to transform lives and lead positive change across the rental industry. Together we'll deliver a better future, a greener climate, thriving communities, successful customers, and engaged colleagues providing greater social impact.

With sustainability, innovation, and business governance at the heart of our plan, we are committed to driving emissions down, helping you achieve your sustainability goals today and developing tomorrow's essential skills and jobs.

**SCAN ME TO FIND OUT MORE ABOUT  
OUR PLAN FOR A GREENER FUTURE**



[SUNBELTRENTALS.CO.UK](https://sunbeltrentals.co.uk) FOR MORE INFO



**our planet**



## OUR DEPOT NETWORK

### HIRE DESK

T: 0800 6300 472

E: [airqualitycontrol@sunbeltrentals.co.uk](mailto:airqualitycontrol@sunbeltrentals.co.uk)

We have a nationwide network of depots that can support you with all your equipment rental needs. You can contact our Air Quality Control team at these depots.

#### CHESSINGTON

Unit 6, Chessington Industrial Estate,  
Lion Park Avenue, Chessington,  
KT9 1ST

#### MANCHESTER

Harper Road, Sharston, Wythenshawe,  
Manchester, M22 4RG



SCAN ME TO FIND OUT MORE ABOUT  
THE FULL RANGE OF PRODUCTS



# RENTAL EQUIPMENT AND MANAGED SOLUTIONS

Sunbelt Rentals - Providing rental and managed solutions into every market sector.



## Plant

The widest range of plant including the latest stage v and battery powered machines in the UK



## Industrial

On your site to meet the demands where every second counts



## Plant Attachments

The sole UK distributor for several of the world's leading attachment manufacturers



## Utilities

The UK's largest specialist Utility hire company



## Powered Access

The combined height and reach of our equipment can transport you safely over 50,000 metres



## Safety & Communications

Knowledgeable and experienced specialists in this field



## Lifting

Our solutions have been used on 7/10 of the tallest buildings in the UK



## Survey

Industry-leading supplier of land survey and precision measurement technologies



## Energy

From fuel saving cleaner energy solutions to the latest stage v generators, we have a temporary power solution for every site



## Test & Monitoring

Europe's leading test equipment specialists since 1996



## Tools

From battery powered hand tools to compressors, compactors and cleaning equipment we offer a wide range of tool hire that's local to you



## Non-Mech

Essentials for every site; fencing, barriers, trenching, ground protection, vehicle and pedestrian control solutions



## Climate Control

Economical and efficient temperature control and HVAC Solutions



## Rail

We support the Network Rail and Transport for London infrastructure



## Accommodation

24/7/365 call out facility covering 20,000 items on fleet



## Hoists

We hold over 10km of mast sections, enough to scale London's Shard building over 32 times



## Trakway

Award winning engineered access and ground protection solutions



## Formwork & Falsework

We are the exclusive hire supplier of MEVA products in the UK



## Traffic Management

24/7 national coverage with operations covered by QEHSS accreditations



## Training

Dedicated Health and Safety training to qualify our own people and our customer's people



## Barriers & Fencing

Crowd control and perimeter security solutions



## Lighting

Our state-of-the-art tower lights will keep your worksites safe and secure



## Film & TV

From cameras, grip and lighting to backlot infrastructure



## Flooring Solutions

Floor care and maintenance equipment to prepare, clean and maintain any floor, any size, anywhere

**Whatever, whenever, wherever.**  
**Leave the **how** to us.**



**Scan me to find out more about  
the full range of products.**